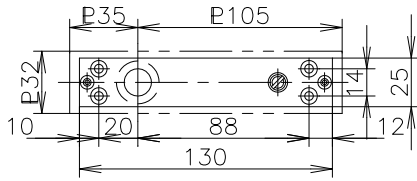
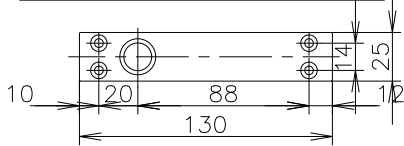



Top pivot (upper frame side)



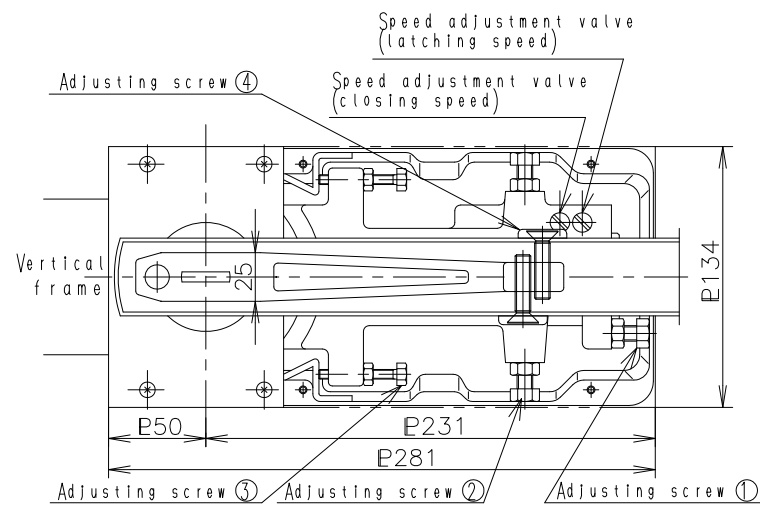
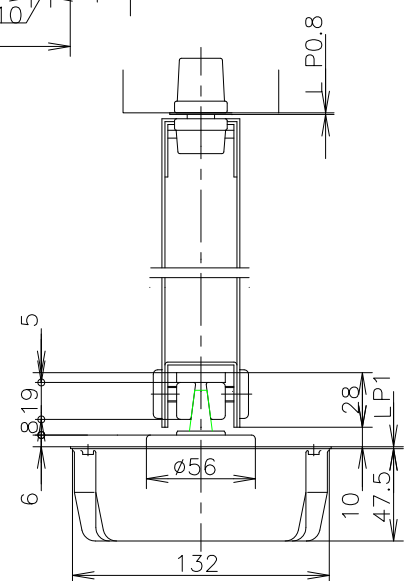
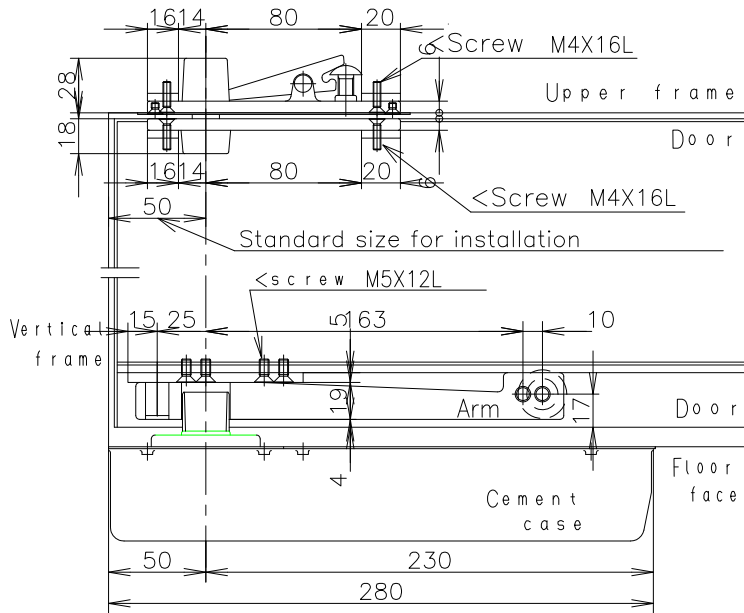
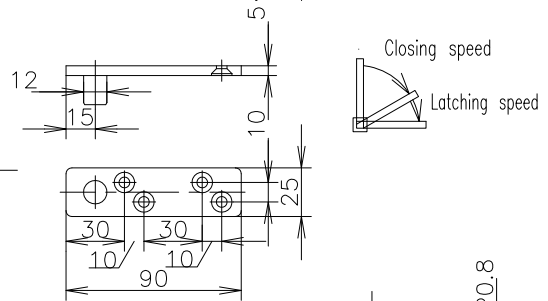
Top pivot (door side)



OPENING SYSTEM OF DOOR	MODEL NUMBER		FITTING SIZE AND WEIGHT	
			WIDTH X HEIGHT (mm)	DOOR WEIGHT (Kg)
CENTER HUNG PAIR DOORS OPENED OF IN DOUBLE ACTION  MAXIMUM OPENING ANGLE 113° HOLD OPEN ANGLE 90°	201N	NON-HOLD	900X2100	80
	S201N	90° HOLD		
	202N	NON-HOLD	950X2100	130
	S202N	90° HOLD		

Notes: Dimension is indicated by m/m unit

Arm plate



**ADJUSTMENT OF DOOR POSITION AND DOOR CLOSING SPEED.**

Adjustment is made by taking off floor plate (backside)

1. Adjusting screws ( 1 2 3 ) are loosened.
2. Adjustment of space between door and vertical frame is made by adjusting screws ( 1 3 ) and tightening lock-nuts of adjusting screws ( 1 3 ).
3. Adjustment of closing position of door is made by adjusting screw 4
4. For further adjustment, after loosening adjusting screw 3 and its lock-nut, adjustment is made by adjusting screw 2 and tightening adjusting screw 3 and its lock-nut.
5. Adjusting screw 2 and its lock-nut are tightened.
6. Adjustment for both closing speed and latching speed is made by turning valves clockwise for slower speed and turning unclockwise for faster speed.